



# MONTHLY MEMBERSHIP PROGRESS REPORT

District 110CO

Results as of: 11/30/2015

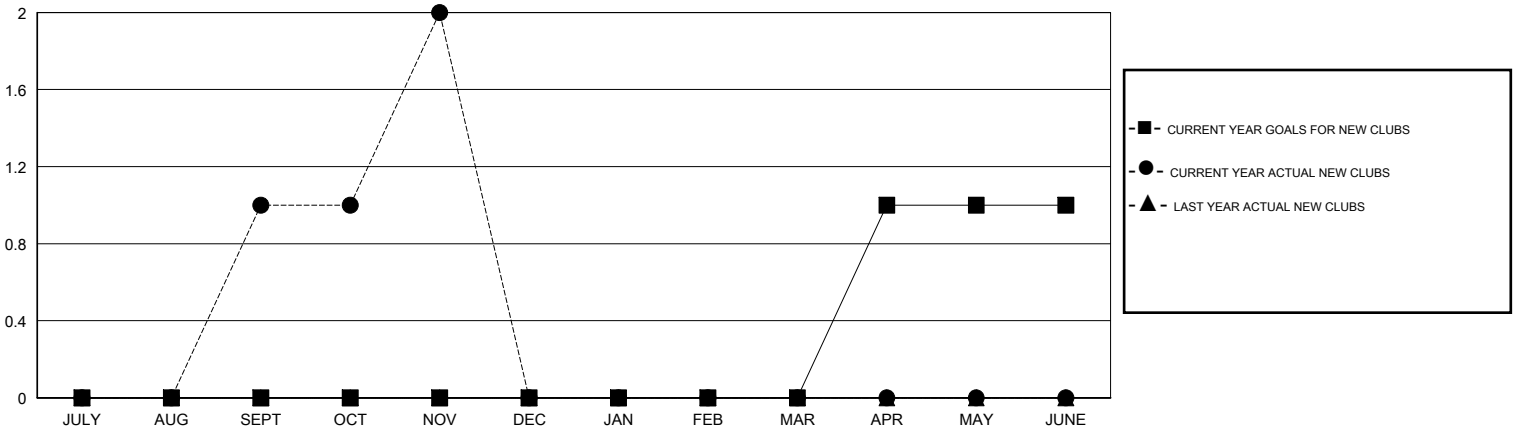
GMT: Elisabeth Haderer

LOCATION NETHERLANDS

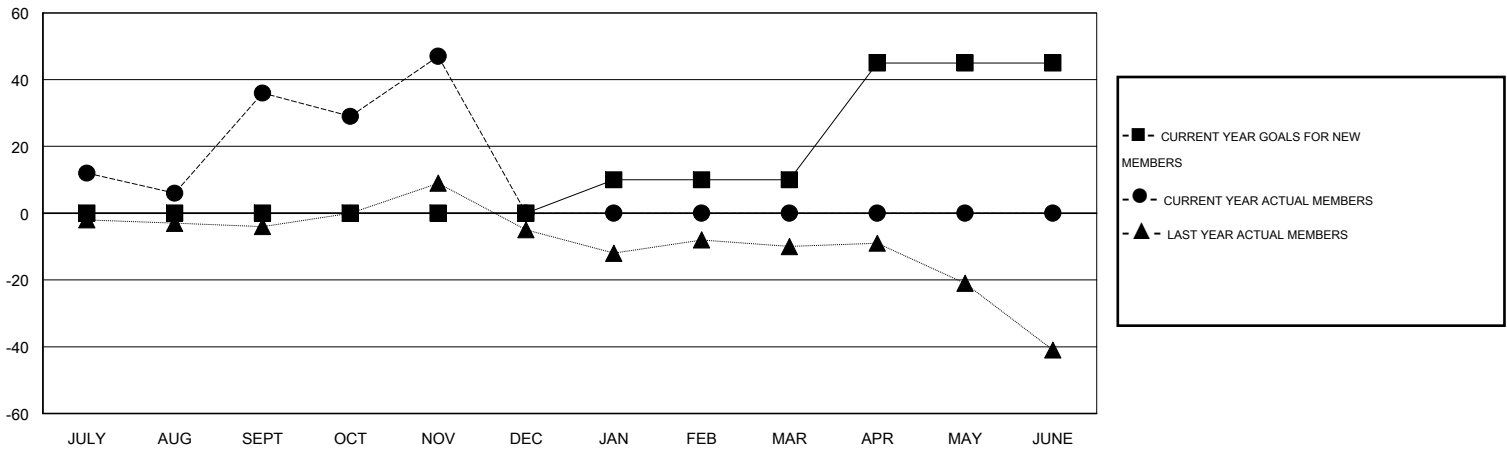
GMT CA 4

Clubs					Members				
RESULTS FOR 2015-2016					RESULTS FOR 2015-2016				
QUARTER	NEW CLUB GOAL	NEW CLUBS	DROPPED CLUBS	NET GAIN/LOSS	QUARTER	NEW MEMBER GOAL	CHARTER AND NEW MEMBERS ADDED	DROPPED MEMBERS	NET GAIN/LOSS
JULY/AUG/SEPT	0	1	0	1	JULY/AUG/SEPT	0	56	20	36
OCT/NOV/DEC	0	1	0	1	OCT/NOV/DEC	0	26	15	11
JAN/FEB/MAR	0	0	0	0	JAN/FEB/MAR	10	0	0	0
APR/MAY/JUNE	1	0	0	0	APR/MAY/JUNE	35	0	0	0

GOALS AND ACTUAL NEW CLUBS CUMULATIVE



GOALS AND ACTUAL MEMBERS CUMULATIVE



DROPPED CLUBS: 0	18 CLUBS OF 78 ADDED 1 OR MORE NEW MEMBERS	<u>GENDER DISTRIBUTION</u>	
<u>DROPPED MEMBERS</u>		MALE	1,784 (85.56%)
DECEASED	<a href="#">CLICK HERE FOR HEALTH ASSESSMENT DATA</a>	FEMALE	301 (14.44%)
CLUB CANCELLED		FAMILY UNIT MEMBERS	10
OTHER		HEAD OF HOUSEHOLD	5
TOTAL		NON-HEAD OF HOUSEHOLD	5